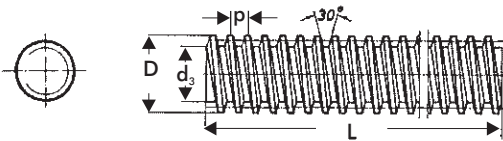


Metric Trapezoidal Thread Spindle & Nuts



Spindle Material: Steel C15+C (1.0401) lower carbon steel DIN En10277)
 Stainless Steel (1.4301- AS2837-1986-304, 1.4305- AS2837-1986-303)

Quality: 7e
 Lead accuracy 0.10mm per 300mm thread lengths (accumulating)
 Straightness tolerance 0.10mm per 300mm (accumulating)
 Right hand thread 10-40mm OD available from stock
 Left hand thread 16-30mm OD available from stock
 Larger and smaller thread dimensions available on request
 Standard stock length: 2mtr, cut in 500mm increments. Max. length 3mtrs.
5mm cutting wastage - please state exact length required



Pitch tolerance > 0.3mm/300mm

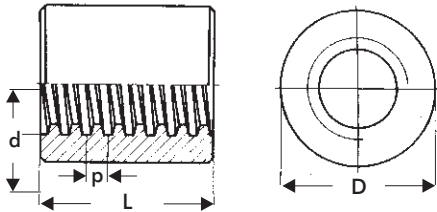
Part No.			Dimensions in mm			Approx. Weight per mtr. Kg.
			Ø D	p	D ₃ min.	
500mm	1000mm	2000mm				
TR10x2x500	TR10x2x1000	TR10x2x2000	10	2	-	0.45
TR10x3x500	TR10x3x1000	TR10x3x2000	10	3	05.84	0.45
TR12x3x500	TR12x3x1000	TR12x3x2000	12	3	07.84	0.75
TR16x4x500	TR16x4x1000	TR16x4x2000	16	4	10.80	1.21
TR20x4x500	TR20x4x1000	TR20x4x2000	20	4	14.80	2.00
TR24x5x500	TR24x5x1000	TR24x5x2000	24	5	17.50	2.72
TR30x6x500	TR30x6x1000	TR30x6x2000	30	6	21.90	4.50
TR36x6x500	TR36x6x1000	TR36x6x2000	36	6	27.90	6.71
TR40x7x500	TR40x7x1000	TR40x7x2000	40	7	30.50	8.00

Round Nuts

- manufactured to DIN 103

Material: Steel 9SMnPb28 (DIN 1.0718) (standard)
 Bronze RG7 GC-CuSn7ZnPb (DIN 2.1090)
 Stainless Steel 1.4305- AS2837-1986-303

Left hand and hexagonal nuts available on request
 Larger and smaller dimensions available on request



Steel			Bronze				Dimensions in mm		
Part No.	Load* KN	Approx. Weight kg.	Part No.	Load** KN	Max. r.p.m.	Approx. Weight kg.	d _{xp}	Ø D	L
SR10x2	-	0.04	BR10x2	-	-	0.06	10x2	22	15
SR10x3	0.4	0.04	BR10x3	1.2	1000	0.06	10x3	22	15
SR12x3	0.6	0.04	BR12x3	1.7	1000	0.06	12x3	22*	18
SR16x4	1.05	0.16	BR16x4	2.6	1000	0.18	16x4	36	24
SR20x4	1.66	0.18	BR20x4	3.8	1000	0.20	20x4	36	30
SR24x5	2.50	0.44	BR24x5	5.5	1000	0.50	24x5	50	36
SR30x6	3.83	0.76	BR30x6	8.0	600	0.88	30x6	60	45
SR36x6	5.66	1.43	BR36x6	11.0	600	1.70	36x6	75	54
SR40x7	6.83	1.54	BR40x7	16.0	500	1.76	40x7	75	60

* Tensile strength load guideline only for steel nut using safety factor 6 in normal operation

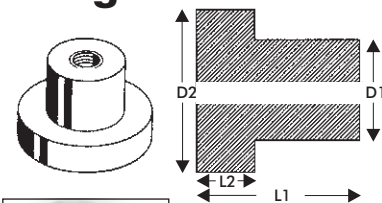
** Maximum load guideline for bronze nuts for rotating spindle in normal operation

• For bronze nut BR12x3 D=25mm

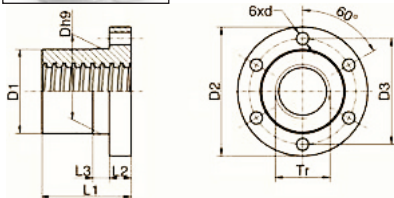
1kN = 101.9716 kilogram force = 224.8089 pounds force (lbf)

Flanged Round Nuts

Material: Bronze RG7 GC-CuSn7ZnPb (DIN 2.1090)



Bronze Flanged Nuts with mounting holes



Bronze W/mounting holes Part Number	Dimensions in mm							Approx. Weight (Kg.)
	D1	D2	D3	d	L1	L2	L3	
BFM 12x3	28	48	38	6	35	12	8	0.27
BFM 16x4	28	48	38	6	35	12	8	0.25
BFM 20x4	32	55	45	7	44	12	8	0.35
BFM 24x5	32	55	45	7	44	12	8	0.30
BFM 30x6	38	62	50	7	46	14	8	0.41
BFM 36x6	45	70	58	7	54	16	10	0.62
BFM 40x7	63	95	78	9	66	16	12	1.69

Note: Bronze flanged nuts with mounting holes are also available in the following sizes:

10x2, 16x4, 14x4, 18x4, 22x5, 26x5, 28x5, 32x6, 44x7, 50x8, 60x9.

All specifications are subject to change without