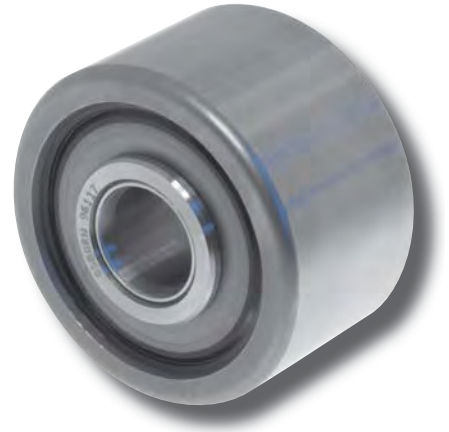
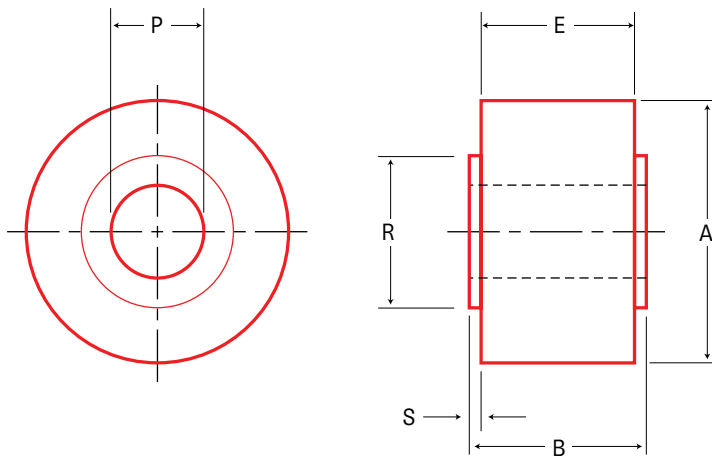


LOAD RUNNERS

Plain Yoke Style - Inch Sizes



For metric sizes, please turn to page 40

Part No.	Item No.	A		B		E		P		R	S	Ball or Tapered Roller Bearing	Bearing Capacity Radial Load (lbs)			Bearing Static Thrust Capacity (lbs)	Approx Weight (lbs)		
		Roller Dia		Roller Width		Tread Width		Bore					Shldr Dia	Shldr Length	3000 hrs L10 life @ 100 RPM			500 hrs L10 life @ 33-1/3 RPM	Static Limit
		+0.000	-0.001	+0.005	-0.010			Nom	Tol										
PLRY-1-1/2	90254	1.500	0.937	0.875	0.437					0.875	0.031	BB	710	1850	780	480	0.3		
PLRY-1-3/4	90255	1.750	1.063	1.000	0.500					1.000	0.031	BB	710	1850	780	480	0.7		
PLRY-2	90256	2.000	1.313	1.250	0.625					1.125	0.031	BB	1300	3400	1810	1120	0.9		
PLRY-2-1/4	90257	2.250	1.313	1.250	0.625					1.125	0.031	BB	1300	3400	1810	1120	1.4		
PLRY-2-1/2	96117	2.500	1.562	1.500	0.750					1.250	0.031	TRB	4570	10880	7630	4570	2.0		
PLRY-2-1/2-7	90107	2.500	1.562	1.500	0.750					1.250	0.031	BB	2130	5590	2530	1560	2.0		
PLRY-2-3/4-7	90108	2.750	1.562	1.500	0.750					1.250	0.031	BB	2130	5590	2530	1560	2.3		
PLRY-3	96118	3.000	1.812	1.750	1.000					1.750	0.031	TRB	6000	14270	20000	12000	2.6		
PLRY-3-1/4	96133	3.250	1.812	1.750	1.000					1.750	0.031	TRB	6000	14270	20000	12000	3.4		
PLRY-3-1/2	96138	3.500	2.062	2.000	1.125					2.000	0.031	TRB	7390	17590	27200	13100	4.2		
PLRY-4	96144	4.000	2.312	2.250	1.250					2.250	0.031	TRB	7390	17590	27200	13100	6.6		
PLRY-5	96154	5.000	2.875	2.750	1.750					3.250	0.062	TRB	13990	33290	51900	32500	11.3		
PLRY-6	96165	6.000	3.375	3.250	2.250					3.500	0.062	TRB	15060	35840	56400	33100	19.4		
PLRY-7	96177	7.000	3.875	3.750	2.750					4.250	0.062	TRB	17830	42430	79800	48400	29.3		
PLRY-8	96184	8.000	4.500	4.250	3.255					4.750	0.125	TRB	35250	83890	159800	110000	43.9		
PLRY-9	96194	9.000	5.000	4.750	3.755					5.500	0.125	TRB	56400	134230	250000	147000	51.6		
PLRY-10	96197	10.000	5.500	5.250	4.255					6.500	0.125	TRB	58080	138240	276000	196000	80.0		

Other sizes available upon request

For HEAVY DUTY SHAFTS see pages 74-75

Refer to INSTALLATION NOTES on pages 87-89

LOAD CAPACITIES ARE BASED ON UNIFORM AND STEADY LOADING.

1 kg = 9,81 N = 2,21 lbs



**Thank you! For viewing product information on the T.E.A.
range of engineering components.**

T.E.A. Transmissions Pty Ltd

349 Tahiti Rd, Tiaro

Qld 4650 AUSTRALIA

Ph: 61-(0)7 4129 2533

Fax: 61-(0)7 4129 2437

sales@tea.net.au

www.tea.net.au



Your partner in quality engineering components since 1986