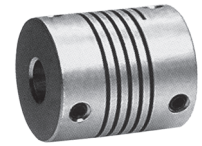
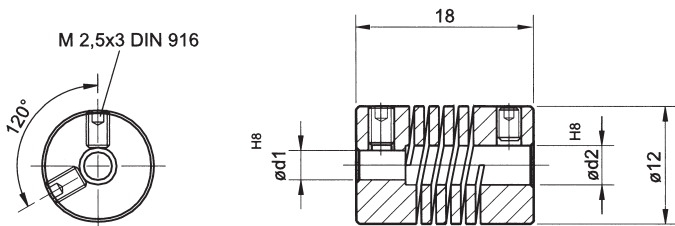


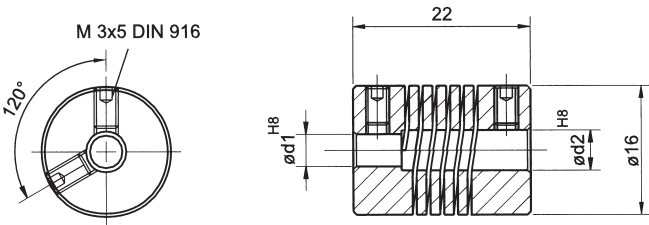
Helix Couplings



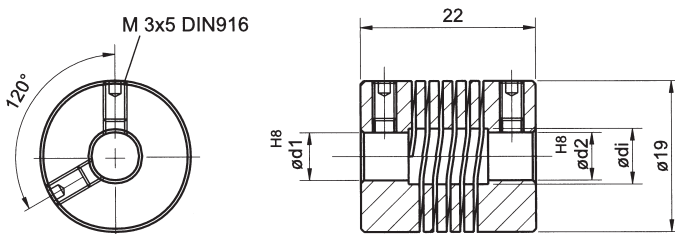
Technical Data		WKAS 1218	WKAS 1622	WKAS 1922	WKAS 2532
Max. speed	min -1	8000	8000	8000	8000
Max. torque	Ncm	25	40	60	100
Max. radial offset	mm	±0.15	±0.2	±0.25	±0.3
Max. axial offset	mm	±0.25	±0.3	±0.4	±0.5
Max. angular offset	degree	±2.5	±3	±3.5	±4
Torsion spring stiffness	Nm/rad	2.8	7.5	9	18
Radial spring stiffness	N/mm	28	34	40	50
Moment of inertia	gcm ²	0.83	3.2	6.7	30
Max. clamping torque	Ncm	35	50	50	120
Weight approx.	g	4	9.5	13	35
Material		Aluminium chromised			



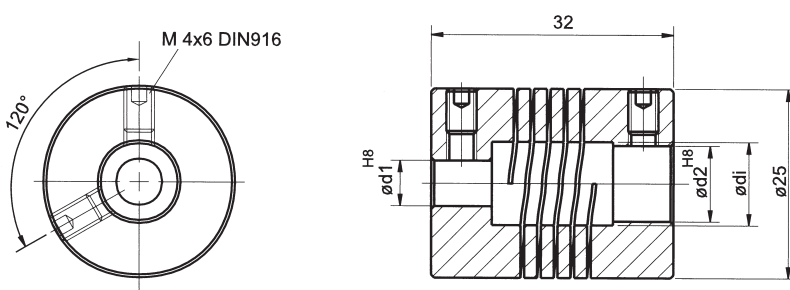
d_1 mm	d_2 mm	Part Number
3	3	WKAS 1218 03/03
3	4	WKAS 1218 03/04
4	4	WKAS 1218 04/04



d_1 mm	d_2 mm	Part Number
3	3	WKAS 1622 03/03
4	4	WKAS 1622 04/04
4	5	WKAS 1622 04/05
5	5	WKAS 1622 05/05



d_1 mm	d_2 mm	Part Number
4	6	WKAS 1922 04/06
5	5	WKAS 1922 05/05
6	6	WKAS 1922 06/06



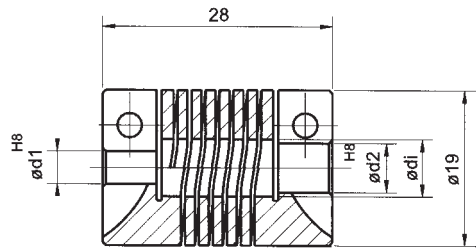
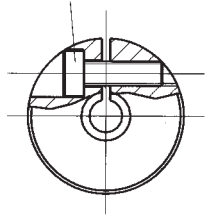
d_1 mm	d_2 mm	Part Number
6	6	WKAS 2532 06/06
6	8	WKAS 2532 06/08
6	10	WKAS 2532 06/10
8	8	WKAS 2532 08/08
8	10	WKAS 2532 08/10
10	10	WKAS 2532 10/10
10	12	WKAS 2532 10/12

Helix Couplings



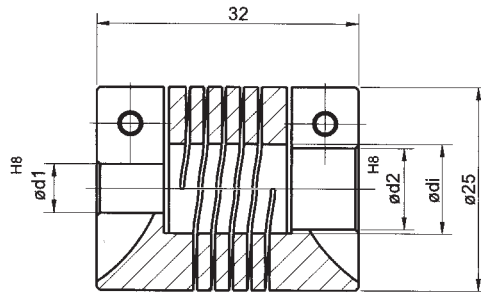
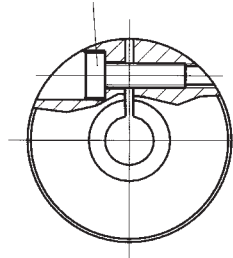
Technical Data		WKAK 1928	WKAK 2532
Max. speed	min -1	6000	6000
Max. torque	Ncm	80	120
Max. radial offset	mm	±0.25	±0.35
Max. axial offset	mm	±0.4	±0.5
Max. angular offset	degree	±4	±4
Torsion spring stiffness	Nm/rad	8	16
Radial spring stiffness	N/mm	36	45
Moment of inertia	gcm ²	8.7	29
Max. clamping torque	Ncm	80	100
Weight approx.	g	16	34
Material		Aluminium chromised	

M 3x10 DIN912



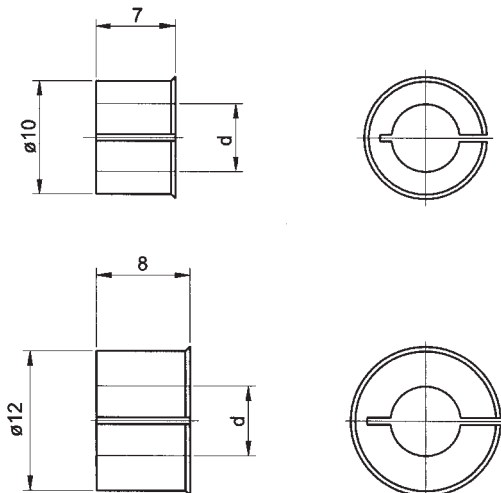
d ₁ mm	d ₂ mm	Part Number
4	4	WKAK 1928 04/04
4	6	WKAK 1928 04/06
5	5	WKAK 1928 05/05
5	6	WKAK 1928 05/06
6	6	WKAK 1928 06/06

M 3x10 DIN912



d ₁ mm	d ₂ mm	Part Number
6	6	WKAK 2532 06/06
6	8	WKAK 2532 06/08
6	10	WKAK 2532 06/10
8	8	WKAK 2532 08/08
8	10	WKAK 2532 08/10
10	10	WKAK 2532 10/10
10	12	WKAK 2532 10/12

Bore Reducers - for adapting a coupler to a variety of shaft dimensions. Adapters can also prevent screws from scoring the shafts and permits repeated re-positioning and easy removal of the coupler. (See also notes on page 253).



Outside Diam. (mm)	Reducing to (mm)	Part Number
10	5	REAN 1007 05
10	6	REAN 1007 06
10	6.35 (1/4")	REAN 1007 63
10	7	REAN 1007 07
10	8	REAN 1007 08
12	6	REAN 1208 06
12	6.35 (1/4")	REAN 1208 63
12	7	REAN 1208 07
12	8	REAN 1208 08
12	9.53 (3/8")	REAN 1208 95
12	10	REAN 1208 10



**Thank you! For viewing product information on the T.E.A.
range of engineering components.**

T.E.A. Transmissions Pty Ltd

349 Tahiti Rd, Tiaro

Qld 4650 AUSTRALIA

Ph: 61-(0)7 4129 2533

Fax: 61-(0)7 4129 2437

sales@tea.net.au

www.tea.net.au



Your partner in quality engineering components since 1986