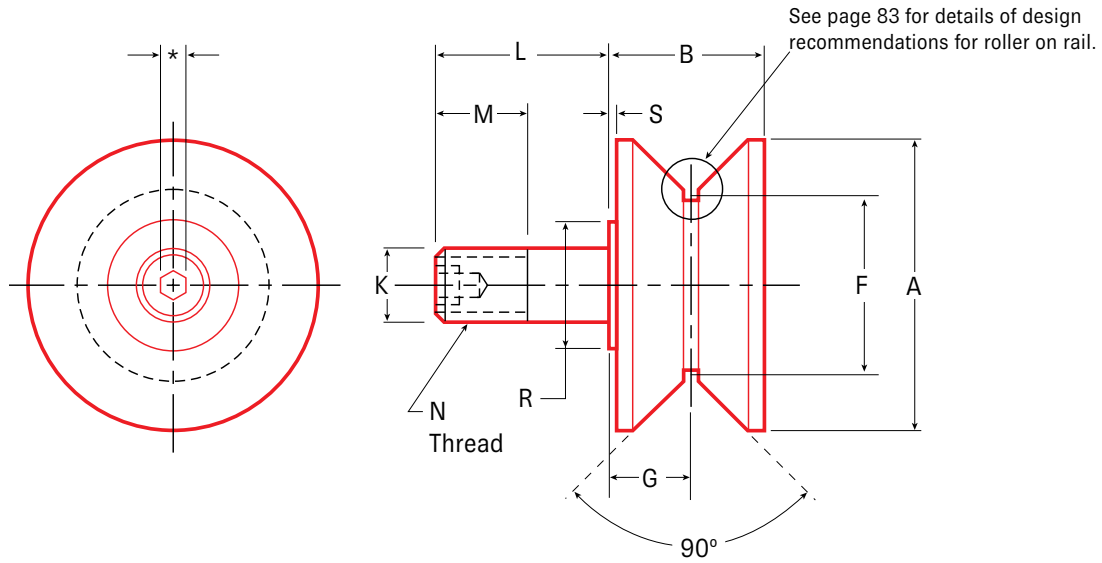


# LOAD RUNNERS

## V-Grooved - Concentric Stud Style, Inch Sizes



For metric sizes, please turn to page 36

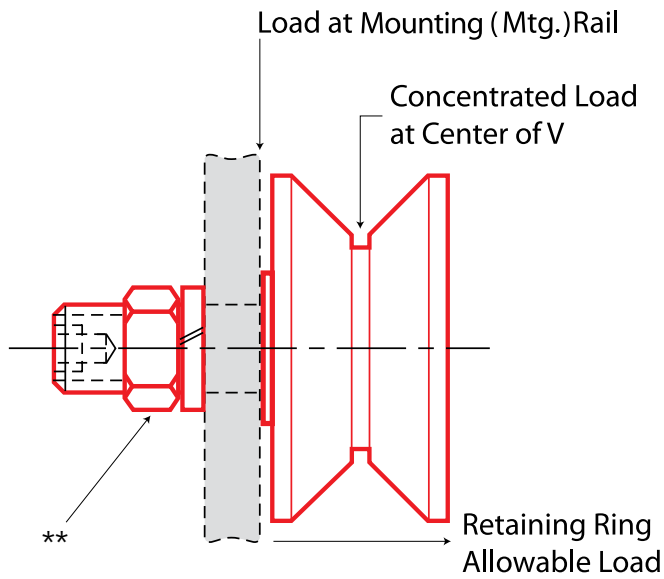
Part No.	Item No.	A	B	F	G	K	L	M	N	R	S
		Roller Dia	Roller Width	Point Dia	Groove Location	Stud Dia +0.000 -0.001	Stud Length	Thread Length	Thread	Shoulder Dia	Shoulder Length
VLR-1-1/2	97334	1.500	0.781	1.125	0.391	0.437	1.000	0.500	7/16-20	0.500	0.031
VLR-2	97335	2.000	0.844	1.375	0.422	0.500	1.250	0.625	1/2-20	0.625	0.031
VLR-2-1/2	95660	2.500	1.312	1.500	0.687	0.750	1.750	0.875	3/4-16	1.000	0.062
VLR-3-1/2	95678	3.500	1.687	2.250	0.875	0.875	2.000	1.125	7/8-14	1.000	0.062
VLR-3-1/2-16	95685	3.500	2.000	2.250	0.875	0.750	2.000	1.125	3/4-16	1.250	0.062
VLR-4-1/2	95729	4.500	2.000	3.000	1.000	1.250	2.500	1.750	1 1/4-12	1.750	0.062
VLR-5-1/2	95760	5.500	2.000	4.000	1.000	1.250	2.750	1.750	1 1/4-12	1.750	0.062
VLR-6-1/2	95770	6.500	3.000	5.000	1.500	2.000	4.500	2.500	2-12	3.250	0.062
VLR-7-1/2	95777	7.500	3.000	6.000	1.500	2.500	5.500	3.250	2 1/2-12	3.250	0.062
VLR-8-1/2	95782	8.500	3.000	7.000	1.500	2.500	5.500	3.250	2 1/2-12	3.250	0.062

Other sizes available upon request.

\*Refer to stud hex socket size and INSTALLATION NOTES on pages 87-89.

\*\*Lock washer and jam nut available, for size see N dimension.

For special features and custom design considerations, see page 7.



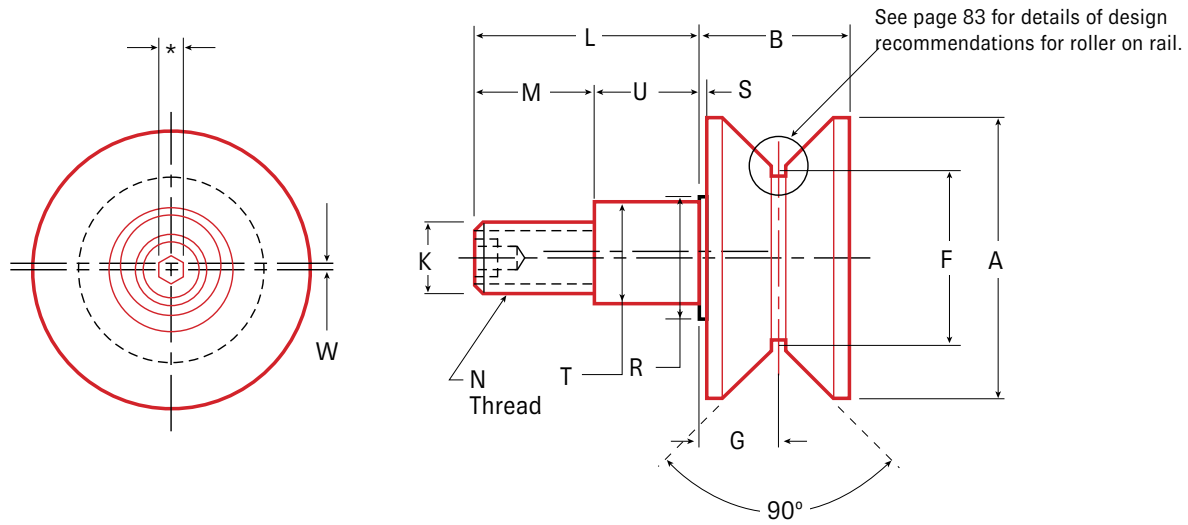
Rec. Mtg. Hole Size	Mounting Member Thickness		Ball or Tapered Roller Bearings	Bearing Capacity Radial Load (lbs)			Bearing Capacity, Static Thrust (lbs)	Stud Capacity (lbs)		Retaining Ring Capacity (lbs)	Approx Weight (lbs)	Part No.
	+0.001 -0.000	Max		Min	3000 hrs L10 life @ 100 RPM	500 hrs L10 life @ 33-1/3 RPM		Static Limit	Bending = 0.75 Sy Bend @V			
0.438	0.625	0.500	BB	240	630	230	140	370	1970	380	0.5	<b>VLR-1-1/2</b>
0.500	0.750	0.625	BB	520	1350	600	370	920	3250	470	0.6	<b>VLR-2</b>
0.751	1.250	1.000	BB	1050	2760	1100	680	1230	5780	470	1.3	<b>VLR-2-1/2</b>
0.876	1.250	1.000	BB	1980	5190	2270	1400	3730	14580	1340	3.4	<b>VLR-3-1/2</b>
0.751	1.250	1.000	TRB	3780	14270	7200	3150	3120	14580	N/A	3.4	<b>VLR-3 1/2-16</b>
1.251	1.250	1.000	TRB	6000	14270	20000	12000	12660	40500	N/A	7.0	<b>VLR-4-1/2</b>
1.251	1.500	1.250	TRB	6000	14270	20000	12000	12660	40500	N/A	10.5	<b>VLR-5-1/2</b>
2.001	3.000	2.000	TRB	15060	35840	^46030	^23010	34880	103670	N/A	25.5	<b>VLR-6-1/2</b>
2.501	3.250	2.250	TRB	15060	35840	^53860	^26930	68130	161990	N/A	37.0	<b>VLR-7-1/2</b>
2.501	3.250	2.250	TRB	15060	35840	56400	^30850	68130	161990	N/A	46.0	<b>VLR-8-1/2</b>

^Surface strength of roller OD

LOAD CAPACITIES ARE BASED ON UNIFORM AND STEADY LOADING.  
1 kg = 9,81 N = 2,21 lbs

# LOAD RUNNERS

## V-Grooved - Eccentric Stud Style - Inch Sizes



For metric sizes, please turn to page 38

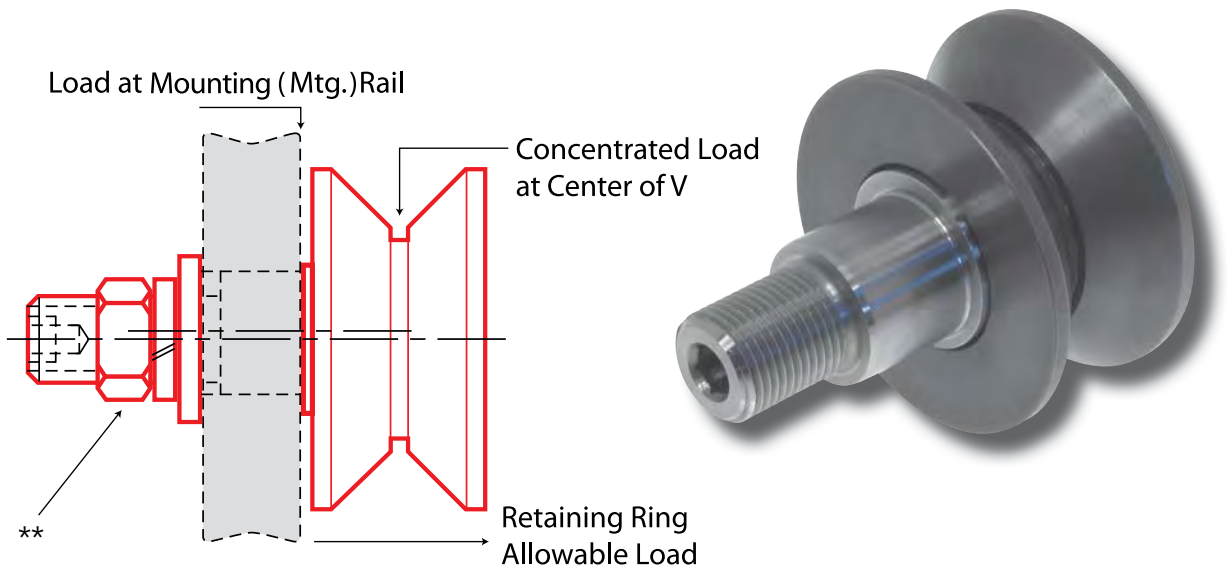
Part No.	Item No.	A	B	F	G	K	L	M	N	R	S	T	U	W
		Roller Dia	Roller Width	Point Dia	Groove Location	Stud Dia	Stud Length	Thread Length	Thread	Shoulder Dia	Shoulder Length	Eccentric Dia	Eccentric Length	
<b>VLRE-1-1/2</b>	97336	1.500	0.781	1.125	0.391	0.437	1.000	0.500	7/16-20	0.750	0.031	0.625	0.500	0.030
<b>VLRE-2</b>	97337	2.000	0.844	1.375	0.422	0.500	1.250	0.625	1/2-20	0.812	0.031	0.687	0.625	0.030
<b>VLRE-2-1/2</b>	95958	2.500	1.312	1.500	0.687	0.750	1.750	0.895	3/4-16	1.375	0.062	1.000	0.855	0.030
<b>VLRE-3-1/2</b>	95970	3.500	1.687	2.250	0.875	0.875	2.000	1.020	7/8-14	1.500	0.062	1.187	0.980	0.030
<b>VLRE-3-1/2-4</b>	95973	3.500	1.890	2.250	0.875	0.750	2.000	1.020	3/4-16	1.500	0.125	1.187	0.980	0.030
<b>VLRE-4-1/2</b>	95986	4.500	2.000	3.000	1.000	1.250	2.500	1.270	1-1/4-12	2.312	0.062	1.750	1.230	0.060
<b>VLRE-5-1/2</b>	95995	5.500	2.000	4.000	1.000	1.250	2.750	1.395	1-1/4-12	2.312	0.062	1.812	1.355	0.060
<b>VLRE-6-1/2</b>	95997	6.500	3.000	5.000	1.500	2.000	4.500	2.375	2-12	3.250	0.062	2.625	2.125	0.060
<b>VLRE-7-1/2</b>	90110	7.500	3.000	6.000	1.500	2.500	5.500	2.625	2-1/2-12	3.625	0.062	3.125	2.875	0.060

Other sizes available upon request.

\*Refer to stud hex socket size and INSTALLATION NOTES on pages 87-89.

\*\*Lock washer and jam nut available, for size see N dimension.

For special features and custom design considerations, see page 7.



Rec. Mtg. Hole Size	Mounting Member Thickness		Ball or Tapered Roller Bearings	Bearing Capacity Radial Load (lbs)			Bearing Capacity, Static Thrust (lbs)	Stud Capacity (lbs)		Retaining Ring Capacity (lbs)	Approx Weight (lbs)	Part No.
	+0.001 -0.000	Max		Min	3000 hrs L10 life @ 100 RPM	500 hrs L10 life @ 33-1/3 RPM		Static Limit	Bending= 0.75 Sy Bend @ V			
0.627	0.625	0.500	BB	240	630	230	140	480	1970	380	0.5	<b>VLRE-1-1/2</b>
0.689	0.750	0.625	BB	520	1350	600	370	920	3250	470	0.6	<b>VLRE-2</b>
1.002	1.000	0.875	BB	1050	2760	1100	680	1230	5780	470	1.4	<b>VLRE-2-1/2</b>
1.189	1.125	1.000	BB	1980	5190	2270	1400	3730	14580	1340	3.4	<b>VLRE-3-1/2</b>
1.189	1.125	1.000	TRB	3780	14270	7200	3150	3120	14580	N/A	3.6	<b>VLRE-3-1/2-4</b>
1.752	1.375	1.250	TRB	6000	14270	20000	12000	12820	40500	N/A	7.3	<b>VLRE-4-1/2</b>
1.814	1.500	1.325	TRB	6000	14270	20000	12000	12820	40500	N/A	10.9	<b>VLRE-5-1/2</b>
2.627	2.500	2.250	TRB	15060	35840	^46030	^23010	37300	103670	N/A	26.5	<b>VLRE-6-1/2</b>
3.127	3.250	3.000	TRB	15060	35840	53860	^26930	72900	161990	N/A	39.5	<b>VLRE-7-1/2</b>

^ Surface strength of roller OD

LOAD CAPACITIES ARE BASED ON UNIFORM AND STEADY LOADING.  
1 kg = 9,81 N = 2,21 lbs



**Thank you! For viewing product information on the T.E.A.  
range of engineering components.**

**T.E.A. Transmissions Pty Ltd**

349 Tahiti Rd, Tiaro

Qld 4650 AUSTRALIA

Ph: 61-(0)7 4129 2533

Fax: 61-(0)7 4129 2437

[sales@tea.net.au](mailto:sales@tea.net.au)

[www.tea.net.au](http://www.tea.net.au)



**Your partner in quality engineering components since 1986**